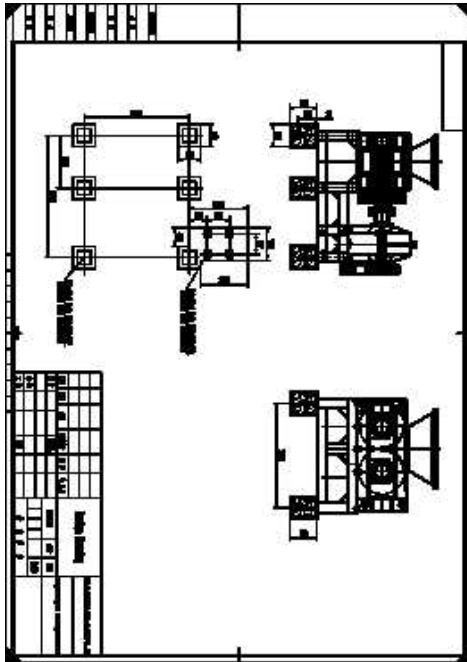


## Briquette manufacturing plant (900000 R)



Location **Gauteng, Johannesburg**  
<https://www.freeadsz.co.za/x-1506-z>



Use coal fines (duff) or dust to make proper coal briquettes or charcoal or saw dust shavings. Two briquette sizes - 35mm and 65mm. Can produce 35 tons briquettes per 10 hour shift. This plant is brand new, never been used and consists of the following: Box Feeder WLGL800; Double Shaft Mixer WJ-5000. YJ-1500 Binder Mixer; PD650Ä—15m Belt Conveyor; WLXM-1000 Briquette Machine; PD800Ä—12m Belt Conveyor; WLG-206 Mesh Belt Dryer; PD650Ä—15m Belt Conveyor; XL-21 Electric Panel Controller. Willing to do apart finance



**Briquette manufacturing plant**  
<https://www.freeadsz.co.za/x-1506-z>



**Briquette manufacturing plant**  
<https://www.freeadsz.co.za/x-1506-z>



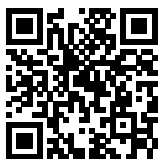
**Briquette manufacturing plant**  
<https://www.freeadsz.co.za/x-1506-z>



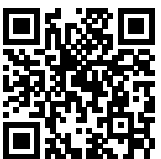
**Briquette manufacturing plant**  
<https://www.freeadsz.co.za/x-1506-z>



**Briquette manufacturing plant**  
<https://www.freeadsz.co.za/x-1506-z>



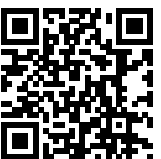
**Briquette manufacturing plant**  
<https://www.freeadsz.co.za/x-1506-z>



**Briquette manufacturing plant**  
<https://www.freeadsz.co.za/x-1506-z>



**Briquette manufacturing plant**  
<https://www.freeadsz.co.za/x-1506-z>



**Briquette manufacturing plant**  
<https://www.freeadsz.co.za/x-1506-z>



**Briquette manufacturing plant**  
<https://www.freeadsz.co.za/x-1506-z>